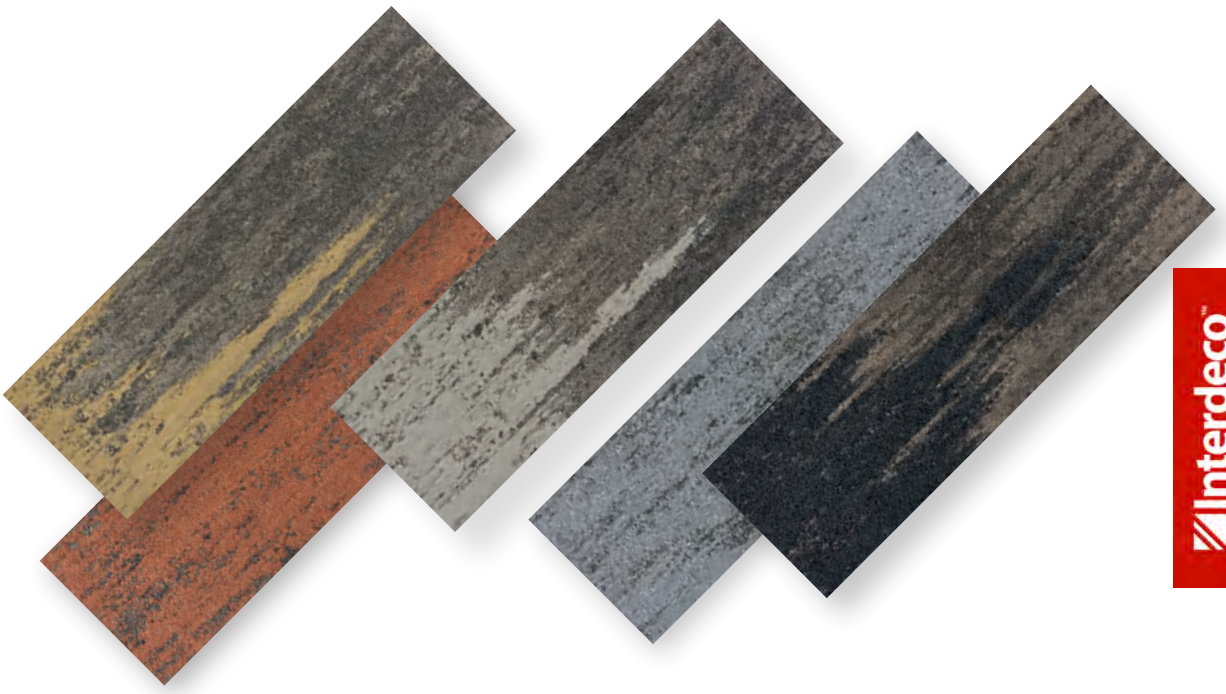




 Interdeco™

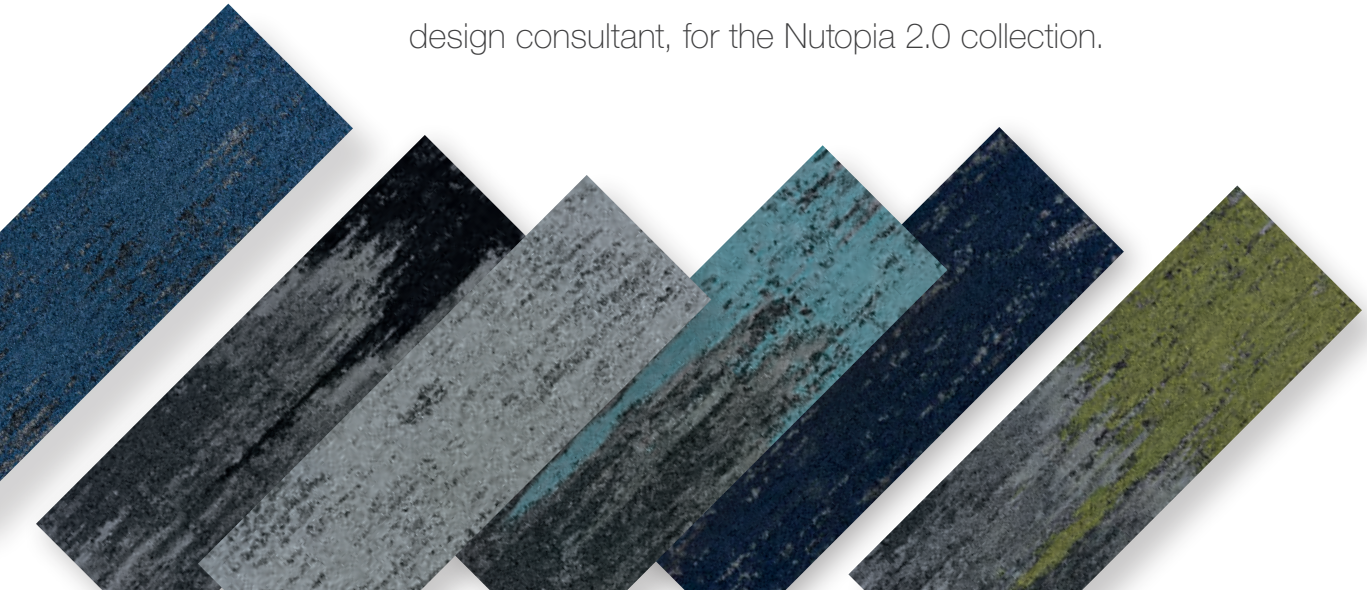
Nutopia 2.0

Urban Field II Urban Fringe II Urban Passage II Urban Canvas



 Interdecos

Mohawk Group's ongoing quest for sustainable innovation delivers Nutopia 2.0, an expansion of the award-winning Living Product carpet plank system inspired by the urban fabric of our lives. As we consider how humankind coexists with buildings, streets and other infrastructure, we must also consider how we as humans coexist with nature. Mohawk Group's Pattern Perfect precision tufting platform brings to life three new styles that double down on a commitment to responsible manufacturing practices. At the intersection of design and sustainability, Nutopia 2.0 embodies Mohawk Group's commitment to dematerialization and a more restorative, carbon neutral future. Mohawk Group collaborated with Gensler, serving as product design consultant, for the Nutopia 2.0 collection.





Urban Fringe II 945 Skyway & 989 Darklands, Urban Passage II 945 Skyway & 989 Darklands, Urban Field II 989 Pavement
Cover: Urban Fringe II 959 Metropolis, Urban Passage II 959 Metropolis, Urban Field II 989 Pavement (Random Installation)



Urban Field II 989 Pavement, Urban Fringe II 945 Skyway, Urban Passage II 945 Skyway (Random Installation)

Today, the built environment generates nearly 40% of annual greenhouse gas emissions and 50% of the world's energy usage. As Mohawk Group continues its journey to Believe in Better, we have an urgent responsibility to lead our industry in meeting and exceeding net zero carbon standards.

Guided by the principles of the Living Product Challenge, our designers and engineers seek to develop products that are:

- Healthy and free of toxins
- Socially responsible and respectful of workers' rights
- Net positive to benefit both people and the environment



Living Product Challenge

Produced at our Living Site, Nutopia 2.0 is Net Positive for both carbon and water, and achieves Living Product Certification from the International Living Future Institute by complying with multiple imperatives of all seven petals listed below.



PLACE



WATER



MATERIALS



EQUITY



BEAUTY



HEALTH & HAPPINESS



ENERGY





Urban Passage II 959 Metropolis (Herringbone Installation)



Urban Field II 889 Museum (Brick Ashlar Installation)
Urban Field II 889 Museum, Urban Passage II 861 Bridge, Urban Fringe II 861 Bridge, (6" Lap Installation)



Urban Fringe II 889 Archway (Brick Ashlar Installation)



Three Tile System

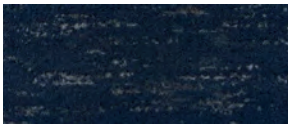
Nutopia 2.0 is designed to transition across the floor or create defined areas in the built environment. Urban Fringe II, Urban Passage II, and Urban Field II's progressive color composition works together as a dynamic system or separately, depending on the desired configuration, end-use and budget. Due to its unique construction and texture, Urban Canvas installs separately, ideally suited for large, open spaces.



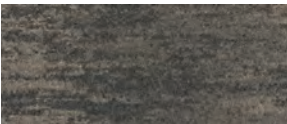
Urban Field II 989



Urban Passage II 985



Urban Fringe II 985



Urban Field II 889



Urban Passage II 861

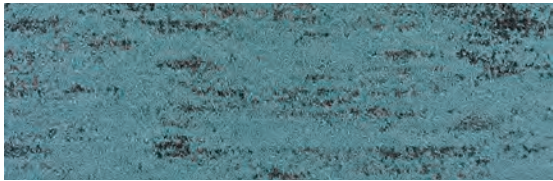


Urban Fringe II 861





Urban Fringe II, Urban Passage II



Urban Fringe II 945 Skyway



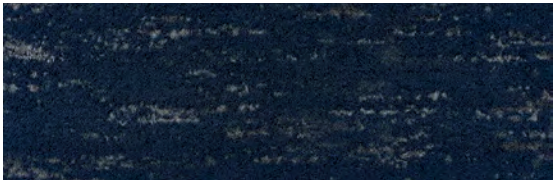
Urban Passage II 945 Skyway



Urban Fringe II 975 Riverside



Urban Passage II 975 Riverside



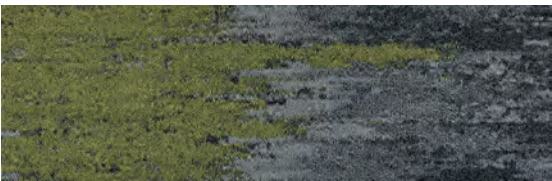
Urban Fringe II 985 Metroscope



Urban Passage II 985 Metroscope



Urban Fringe II 956 Greenspace



Urban Passage II 956 Greenspace



Urban Fringe II 959 Metropolis



Urban Passage II 959 Metropolis



Urban Fringe II 989 Darklands



Urban Passage II 989 Darklands

Urban Field II, Urban Canvas



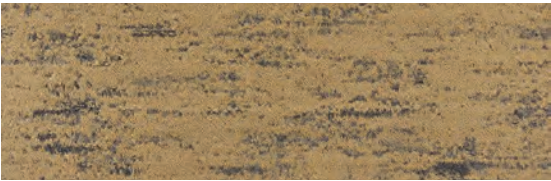
Urban Field II 989 Pavement



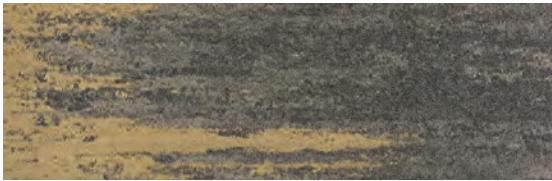
Urban Canvas 989 Edifice



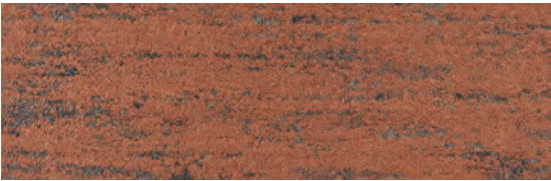
Urban Fringe II, Urban Passage II



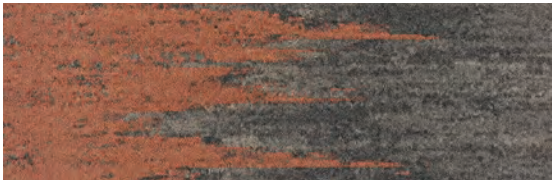
Urban Fringe II 861 Bridge



Urban Passage II 861 Bridge



Urban Fringe II 862 Neighborhood



Urban Passage II 862 Neighborhood



Urban Fringe II 867 Uptown



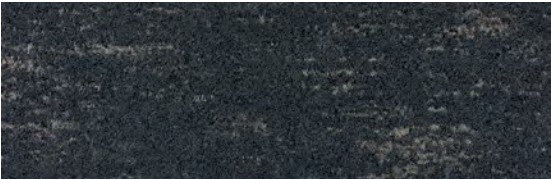
Urban Passage II 867 Uptown



Urban Fringe II 869 Landmark



Urban Passage II 869 Landmark



Urban Fringe II 889 Archway



Urban Passage II 889 Archway



Urban Field II, Urban Canvas



Urban Field II 889 Museum



Urban Canvas 889 Portico

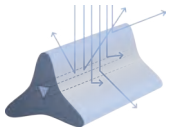


Features & Benefits

Nutopia 2.0 offers a sustainable and worry-free system of performance, utilizing Mohawk Group's industry-leading Duracolor Tricolor fiber, award-winning Heathered Hues yarn, and high-performance EcoFlex™ NXT carpet tile backing.



Nutopia 2.0 is also designed to work with projects seeking these green building Certifications.



Duracolor Tricolor

Delivering unsurpassed stain resistance, colorfastness, durability, color clarity and enhanced soil performance, Duracolor Tricolor builds upon the trusted Duracolor promise with over 100 million yards installed since 1992.



- Permanent built-in stain resistance



- Optimizes soil hiding, soil removal and color clarity



- Resists crushing for enhanced durability and longer lifecycles

Heathered Hues

This highly sustainable, solution-dyed fiber creates a stylized textured and blended yarn in a desirable palette of warm and cool neutrals with vibrant color accents. It's variegated wool-like appearance adds warmth and sophistication to any interior.



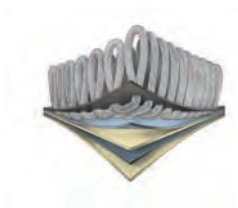
- Zero water is used to manufacture this yarn



- Proprietary extrusion reduces energy needed



- Dematerialized yarn for lower environmental impact



EcoFlex™ NXT

EcoFlex™ NXT is a red list free polyolefin carpet tile backing that is up to 40% lighter than similar competitive products. Less expensive to ship and easy installation with no moisture testing required in most cases.*



- Net Positive impact for both Carbon and Water



- 35% pre-consumer recycled content based on total product weight**



- Installs in high moisture conditions up to 99%RH with FlexLok Tab System

* Refer to Mohawk Group installation documents at MohawkGroup.com for more information.

** Recycled content claim third party verified by UL (Underwriters Laboratory)

Specifications

Nutopia Collection 2.0
Urban Passage II (GT444), Urban Fringe II (GT445), Urban Field II (GT446), Urban Canvas (GT412)
Carpet Plank

DESIGN

Size	12" x 36" (.3048m x .9144m)
Surface Appearance	Textured Patterned Loop
Fiber Type	Duracolor Premium Nylon®
Dye Method	Solution Dyed
Installation Methods	
Urban Passage II	6" Lap, Half-Lap, Brick Ashlar, Basket Weave, Plank Half-Lap, Herringbone
Urban Fringe II	6" Lap, Half-Lap, Brick Ashlar, Basket Weave, Plank Half-Lap, Herringbone
Urban Field II	6" Lap, Half-Lap, Brick Ashlar, Basket Weave, Plank Half-Lap, Herringbone
Urban Canvas	Half-Lap, Brick Ashlar, Basket Weave, Plank Half-Lap, Herringbone
Colors Available	
Urban Passage II & Fringe II	11
Urban Field II & Urban Canvas	2

PERFORMANCE

Construction	Tufted
Gauge	1/12" (47.00 rows per 10cm)
Stain Release Technology	Permanent, Built into the Fiber
GSA Stain Release Rating	Passes
Soil Release Technology	EcoSentry Soil Protection
Backing Material	EcoFlex™ NXT
Flammability	ASTM E 648 - Class 1 (Glue Down)
Smoke Density	ASTM E 662 - Less than 450
Static Propensity	AATCC - 134 Under 3.5 KV

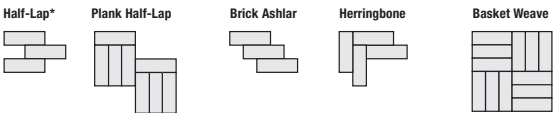
SUSTAINABILITY

Certification	Living Product Challenge Petal Certified; Declare Red List Free
Indoor Air Quality	Green Label Plus Certified #1171
NSF 140	Gold
Carbon	Net Positive Carbon
Water	Net Positive Water

SERVICE

Warranties	Lifetime Limited Carpet Tile Warranty, Lifetime Limited Duracolor Stain Warranty, Lifetime Static
------------	---

Installation Instructions:



*Recommended installation per collaborator 6" lap

Mohawk Group warrants its adhesives for the life of the original installation only when a Mohawk Group style (product) is installed. Mohawk's floor preparation procedures must be followed to ensure that the substrate has been prepared properly. Failure to use Mohawk Group adhesives or to follow Mohawk's floor preparation procedures will void all lifetime adhesive warranties. Please contact your local Sales Representative for installation guidelines.

These patterns contain inherent characteristics which may result in pattern run off and/or pattern appearance variations at the seams or tile edges (darker or lighter pattern lines). These characteristics are inherent in the patterns and are not manufacturing defects. Consideration to these characteristics should be given when selecting an installation method.

Chair pads are recommended under office chairs with roller casters to preserve appearance retention, act as a deterrent toward delamination and to prevent premature or accelerated wear. Walk-off tiles from the Tuff Stuff II Collection are recommended at entryways to reduce soiling.

Mohawk Group is providing this architect folder for the purpose of promoting our commercial business. This folder and its samples shall remain the property of Mohawk Group. Color may vary from dye lot to dye lot. Substitution of material may be made due to improved technology, supply limitations or other factors. The performance of this product is not affected by such variations.

For current and complete specifications please visit www.mohawkgroup.com

All product designs presented in this brochure © Gensler 2020.



877-3RE-CYCL



Produced with recycled materials





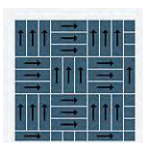
Urban Field II

Collection	Nutopia 2
Style Name	Urban Field II
Style Number	GT446
Product Type	Carpet Tile
Size	12" X 36"
Construction	Tufted
Installation	1/6-inch Lap, Half Lap, Brick Ashlar, Basket

Feature	Description
Backing Material	EcoFlex NXT
Fiber Type	Duracolor® Tricor Premium Nylon
Dye Method	Solution Dyed
Installation Methods	1/6-inch Lap, Half Lap, Brick Ashlar, Basket
Stitches per Inch	28.5 (112.2 per 10cm)
Density	8280
Tufted Pile Weight	24.00 oz/yd ² (814 g/m ²)
Surface Texture	Textured Patterned Loop



Recommended Installation Methods



Basket Weave



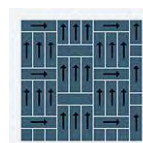
Brick Ashlar



Half Lap



Herringbone



Plank Half Lap

Colorways



Museum

Color code: 889
Style number: GT446



Pavement

Color code: 989
Style number: GT446

Performance

Feature	Description
Gauge	1/12 (47.00 rows per 10 cm)
Stain Release Technology	Pass
Foot Traffic Recommendation TARR	Severe
Flammability	ASTM E 648 Class 1 (Glue Down)
Smoke Density	ASTM E 662 Less than 450
Static Propensity	AATCC-134 Under 3.5 KV
Pattern Repeat	Not Applicable
Soil Release Technology	EcoSentry Soil Protection



Sustainability

Feature	Description
Beyond Carbon Neutral	This product is 100% carbon neutral plus an additional 5% offset
Carbon Handprint	-0.075 kg CO2e/ft2
Embodied Carbon	1.49 kg CO2e/ft2
Total Recycled Content	57%
Pre-Consumer Recycled Content	57%
NSF 140	EcoFlex NXT - NSF 140 Gold
Indoor Air Quality	GLP 1171
TVOC Range	0.5 mg/m3 or less
Red List Free	True
CDPH V1.1-2010 Compliant	True
Declare Label	Nylon Modular Carpet on EcoFlex NXT
Mindful Materials	Participates in Mindful Materials Library
Take Back Program	ReCover Program
Health Product Declaration	HPD 2.1 EcoFlex NXT Gold - 1000 ppm
Environmental Claims Validation	EPD EcoFlex NXT
Global Green Tag	GreenRate Level A, LCARate Silver Plus
LEED Credit Potential	LEED Eligible

Warranties

Lifetime Limited Carpet Tile Warranty, Lifetime Limited Duracolor Stain Warranty, Lifetime Static

Urban Fringe II

Collection	Nutopia 2
Style Name	Urban Fringe II
Style Number	GT445
Product Type	Carpet Tile
Size	12" X 36"
Construction	Tufted
Installation	1/6-inch Lap, Half Lap, Brick Ashlar, Basket

Feature	Description
Backing Material	EcoFlex NXT
Fiber Type	Duracolor® Tricor Premium Nylon
Dye Method	Solution Dyed
Installation Methods	1/6-inch Lap, Half Lap, Brick Ashlar, Basket
Stitches per Inch	31.5 (124.02 per 10cm)
Density	7527
Tufted Pile Weight	23.00 oz/yd2 (780 g/m2)
Surface Texture	Textured Patterned Loop



Recommended Installation Methods



Basket Weave



Brick Ashlar



Half Lap



Herringbone



Plank Half Lap

Colorways



Bridge

Color code: 861
Style number: GT445



Neighborhood

Color code: 862
Style number: GT445



Uptown

Color code: 867
Style number: GT445



Landmark

Color code: 869
Style number: GT445



Archway

Color code: 889
Style number: GT445



Skyway

Color code: 945
Style number: GT445



Green Space

Color code: 956
Style number: GT445



Metropolis

Color code: 959
Style number: GT445



Riverside

Color code: 975
Style number: GT445



Metroscape

Color code: 985
Style number: GT445



Darklands

Color code: 989
Style number: GT445

Performance

Feature	Description
Gauge	1/12 (47.00 rows per 10 cm)
Stain Release Technology	Pass
Foot Traffic Recommendation TARR	Severe
Flammability	ASTM E 648 Class 1 (Glue Down)
Smoke Density	ASTM E 662 Less than 450
Static Propensity	AATCC-134 Under 3.5 KV
Soil Release Technology	EcoSentry Soil Protection

Sustainability

Feature	Description
Beyond Carbon Neutral	This product is 100% carbon neutral plus an additional 5% offset
Carbon Handprint	-0.072 kg CO2e/ft2
Embodied Carbon	1.45 kg CO2e/ft2
Total Recycled Content	57%
Pre-Consumer Recycled Content	57%
NSF 140	EcoFlex NXT - NSF 140 Gold
Indoor Air Quality	GLP 1171
TVOC Range	0.5 mg/m3 or less
Red List Free	True
Declare Label	Nylon Modular Carpet on EcoFlex NXT
Mindful Materials	Participates in Mindful Materials Library
Take Back Program	ReCover Program
Health Product Declaration	HPD 2.1 EcoFlex NXT Gold - 1000 ppm
Environmental Claims Validation	EPD EcoFlex NXT
Global Green Tag	GreenRate Level A, LCARate Silver Plus
LEED Credit Potential	LEED Eligible



Warranties

Lifetime Limited Carpet Tile Warranty, Lifetime Limited Duracolor Stain Warranty, Lifetime Static

Urban Passage II

Collection	Nutopia 2
Style Name	Urban Passage II
Style Number	GT444
Product Type	Carpet Tile
Size	12" X 36"
Construction	Tufted
Installation	1/6-inch Lap, Half Lap, Brick Ashlar, Basket

Feature	Description
Backing Material	EcoFlex NXT
Fiber Type	Duracolor® Tricor Premium Nylon
Dye Method	Solution Dyed
Installation Methods	1/6-inch Lap, Half Lap, Brick Ashlar, Basket
Stitches per Inch	30 (118.11 per 10cm)
Density	8280
Tufted Pile Weight	23.00 oz/yd2 (780 g/m2)
Surface Texture	Textured Patterned Loop



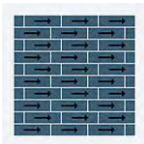
Recommended Installation Methods



Basket Weave



Brick Ashlar



Half Lap



Herringbone



Plank Half Lap

Colorways



Bridge

Color code: 861
Style number: GT444



Landmark

Color code: 869
Style number: GT444



Green Space

Color code: 956
Style number: GT444



Metroscape

Color code: 985
Style number: GT444



Neighborhood

Color code: 862
Style number: GT444



Archway

Color code: 889
Style number: GT444



Metropolis

Color code: 959
Style number: GT444



Darklands

Color code: 989
Style number: GT444



Uptown

Color code: 867
Style number: GT444



Skyway

Color code: 945
Style number: GT444



Riverside

Color code: 975
Style number: GT444

Performance

Feature	Description
Gauge	1/12 (47.00 rows per 10 cm)
Stain Release Technology	Pass
Foot Traffic Recommendation TARR	Severe
Flammability	ASTM E 648 Class 1 (Glue Down)
Smoke Density	ASTM E 662 Less than 450
Static Propensity	AATCC-134 Under 3.5 KV
Soil Release Technology	EcoSentry Soil Protection

Sustainability

Feature	Description
Beyond Carbon Neutral	This product is 100% carbon neutral plus an additional 5% offset
Carbon Handprint	-0.072 kg CO2e/ft2
Embodied Carbon	1.45 kg CO2e/ft2
Total Recycled Content	57%
Pre-Consumer Recycled Content	57%
NSF 140	EcoFlex NXT - NSF 140 Gold
Indoor Air Quality	GLP 1171
TVOC Range	0.5 mg/m3 or less
Red List Free	True
Declare Label	Nylon Modular Carpet on EcoFlex NXT
Mindful Materials	Participates in Mindful Materials Library
Take Back Program	ReCover Program
Health Product Declaration	HPD 2.1 EcoFlex NXT Gold - 1000 ppm
Environmental Claims Validation	EPD EcoFlex NXT
Global Green Tag	GreenRate Level A, LCARate Silver Plus
LEED Credit Potential	LEED Eligible



Warranties

Lifetime Limited Carpet Tile Warranty, Lifetime Limited Duracolor Stain Warranty, Lifetime Static

Urban Canvas

Collection	Nutopia 2
Style Name	Urban Canvas
Style Number	GT412
Product Type	Carpet Tile
Size	12" X 36"
Construction	Tufted
Installation	1/6-inch Lap, Monolithic, Half Lap, Brick /

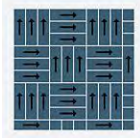
Feature	Description
Backing Material	EcoFlex NXT
Fiber Type	Duracolor® Tricor Premium Nylon
Dye Method	Solution Dyed
Installation Methods	1/6-inch Lap, Monolithic, Half Lap, Brick A
Stitches per Inch	11.5 (45.28 per 10cm)
Density	7200
Tufted Pile Weight	20.00 oz/yd2 (678 g/m2)
Surface Texture	Textured Patterned Loop




gt

bone

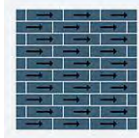
Recommended Installation Methods




Basket Weave



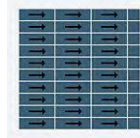
Brick Ashlar



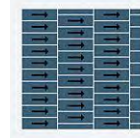
Half Lap



Herringbone



Monolithic



Monolithic Stepping

Colorways



Portico

Color code: 889

Style number: GT412



Edifice

Color code: 989

Style number: GT412

Performance

Feature	Description
Gauge	1/12 (47.00 rows per 10 cm)
Stain Release Technology	Pass
Foot Traffic Recommendation TARR	Heavy
Flammability	ASTM E 648 Class 1 (Glue Down)
Smoke Density	ASTM E 662 Less than 450
Static Propensity	AATCC-134 Under 3.5 KV
Soil Release Technology	EcoSentry Soil Treatment

Sustainability

Feature	Description
Beyond Carbon Neutral	This product is 100% carbon neutral plus an additional 5% offset
Carbon Handprint	-0.066 kg CO2e/ft2
Embodied Carbon	1.33 kg CO2e/ft2
Total Recycled Content	41%
Pre-Consumer Recycled Content	41%
NSF 140	EcoFlex NXT - NSF 140 Gold
TVOC Range	0.5 mg/m3 or less
Red List Free	True
Declare Label	Nylon Modular Carpet on EcoFlex NXT
Mindful Materials	Participates in Mindful Materials Library
Take Back Program	ReCover Program
Health Product Declaration	HPD 2.1 EcoFlex NXT Gold - 1000 ppm
Environmental Claims Validation	EPD EcoFlex NXT
LEED Credit Potential	LEED Eligible

Warranties

Lifetime Limited Carpet Tile Warranty, Lifetime Limited Duracolor Stain Warranty, Lifetime Static