



Expedition

Digital Terrain Seismic Wave Gravitational



The expedition continues as man's quest for new frontiers delves into uncharted territory. Inspired by shifting planes of light and swirling celestial forms, the Expedition collection pushes the boundaries of commercial design. Blend intense colors and cool hues from the deep seas to the far reaches of the cosmos with traditional neutral tones to create unique visual language.





Gravitational 978 Mineral (Brick Ashlar Installation)



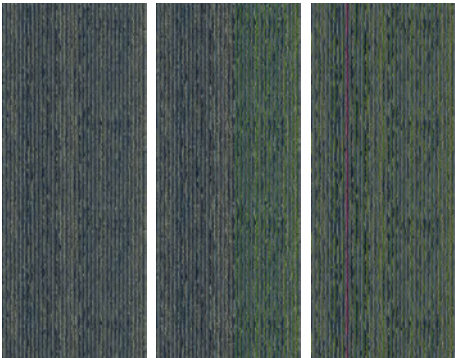
Digital Terrain, Seismic Wave, Gravitational 978 Mineral (Basket Weave Installation)

An Infinite Number Of Possibilities

Use individual patterns or create color progressions. 8 colorways, 3 patterns, all available in 12" x 36" plank.



Digital Terrain 138
Seismic Wave 138
Gravitational 138



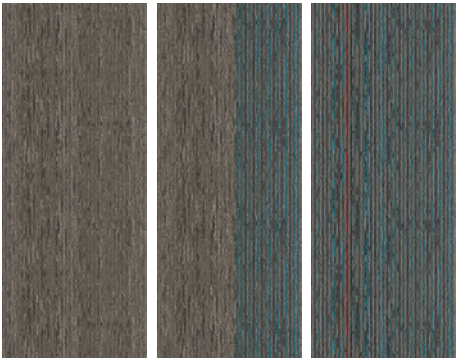
Digital Terrain 576
Seismic Wave 576
Gravitational 576



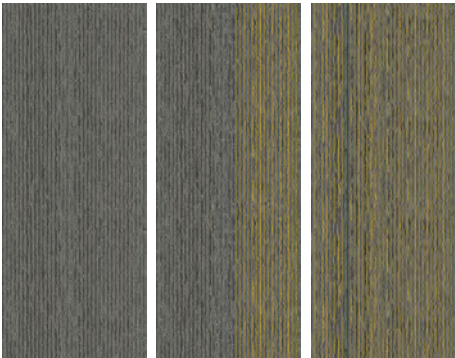
Digital Terrain 739
Seismic Wave 739
Gravitational 739



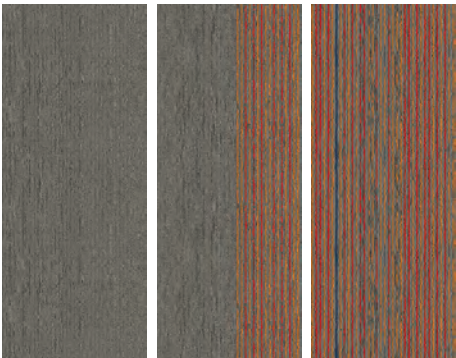
Digital Terrain 856
Seismic Wave 856
Gravitational 856



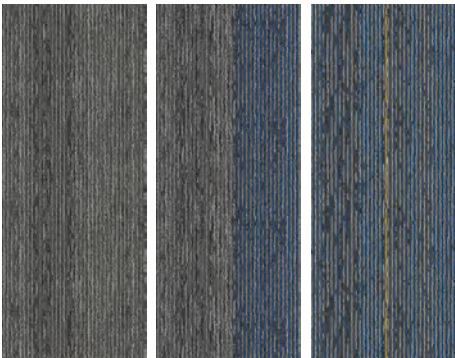
Digital Terrain 869
Seismic Wave 869
Gravitational 869



Digital Terrain 949
Seismic Wave 949
Gravitational 949



Digital Terrain 955
Seismic Wave 955
Gravitational 955



Digital Terrain 978
Seismic Wave 978
Gravitational 978







Seismic Wave 978 Mineral (Random Installation)
Opposite: Digital Terrain 978 Mineral (Brick Ashlar Installation)



Matuto Plus Stone

COORDINATING LVT

Named after the Filipino word for “teacher,” Matuto Plus Stone features eye-catching colors that energize the space and stimulate creativity. Mix and match across the palette of the most popular school colors in the US – from fresh, youthful brights to an array of clean grounded neutrals.



Matuto Plus Stone Colorways



646A Green Grass Stone



656A Botany Stone



556A Mega Blue Stone



555A Blue Night Stone



599A Deep Sea Stone



454A Wizard Stone



353A Red Hot Stone



252A Outrageous Orange Stone



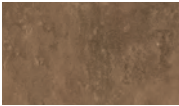
131A Lemon Twist Stone



123A Barely Beige Stone



752A Nutshell Stone



858A Bronze Blast Stone



959A Grey Granite Stone



927A Sonic Silver Stone



926A Agreeable Grey Stone



915A Frostbite Stone

CONSTRUCTION

The 12"x 24" tiles are designed with a versatile concrete style visual and embossed texture, especially relevant in schools, healthcare settings and retail spaces.

PERFORMANCE

The 20 mil commercial wear layer coated with a M-Force™ Ultra finish provides durability and cleanability with a no-polish option that allows for cost-effective maintenance.

COLOR

Mix and match across the palette of the most popular school colors in the US – from fresh, youthful brights to an array of clean grounded neutrals.





Technology & Features

DURACOLOR TRICOR FIBER

Building upon the trusted Duracolor promise with over 100 million yards installed since 1992, new Duracolor Tricor delivers unsurpassed stain resistance, colorfastness, durability, color clarity and enhanced soil performance. Carpet made with Duracolor® Tricor is recyclable, easy to maintain and features inherent stain resistance with water-only stain removal.

ECOFLEX™ NXT CARPET TILE BACKING

EcoFlex™ NXT is a polyolefin carpet tile backing that is up to 40% lighter than similar competitive products, making it easier to install and less expensive to ship. It also incorporates a minimum of 46% pre-consumer/post-industrial recycled content.

TRANSPARENCY

Mohawk embraces transparency and is leading the industry in product transparency, which is now fully embedded in LEED, Living Building Challenge and the WELL Building Standard. Through third party verification, Mohawk holds current and relevant certifications and labels that illustrate our commitment to transparency and healthy interior environments. Within our transparency portfolio, we have Health Product Declarations (HPDs), Environmental Product Declarations (EPDs), Declare labels, and a comprehensive selection of products that meet the stringent requirements of these standards. We also have third party certified recycled content certificates for all of our products. In addition, Mohawk participates in UL's product lens certification.

For full details, visit the technical resources section at [mohawkgroup.com](https://www.mohawkgroup.com)

Specifications

Expedition Collection
Digital Terrain GT341, Seismic Wave GT342, Gravitational GT343
Carpet Plank

DESIGN

Size	12" x 36" (.3048m x .9144m)
Surface Appearance	Textured Patterned Loop
Fiber Type	Duracolor® Tricor Premium Nylon with metallic Duracolor
Dye Method	Solution Dyed
Installation Methods	Monolithic, Monolithic Stepping, Half-Lap, Plank Half-Lap, Brick Ashlar, Random, Herringbone, Basket Weave
Colors Available	8

PERFORMANCE

Construction	Tufted
Gauge	1/12" (47.00 rows per 10cm)
Stain Release Technology	Permanent, Built into the Fiber
GSA Stain Release Rating	Passes
Soil Release Technology	EcoSentry Soil Protection
Backing Material	EcoFlex™ NXT
Flammability	ASTM E 648 - Class 1 (Glue Down)
Smoke Density	ASTM E 662 - Less than 450
Static Propensity	AATCC - 134 Under 3.5 KV

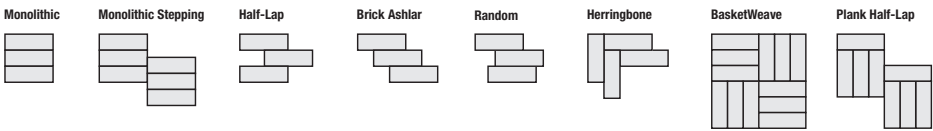
SUSTAINABILITY

Certification	Living Product Challenge Petal Certified; Declared Red List Free
Indoor Air Quality	Green Label Plus Certified #1171
NSF 140	Gold
Carbon	Net Positive Carbon (Neutral +5%)
Water	Net Positive Water (Neutral +5%)

SERVICE

Warranties	Lifetime Limited Carpet Tile Warranty, Lifetime Limited Duracolor Stain Warranty, Lifetime Static
------------	---

Installation Instructions:



Mohawk Group warrants its adhesives for the life of the original installation only when a Mohawk Group style (product) is installed. Mohawk's floor preparation procedures must be followed to ensure that the substrate has been prepared properly. Failure to use Mohawk Group adhesives or to follow Mohawk's floor preparation procedures will void all lifetime adhesive warranties. Please contact your local Sales Representative for installation guidelines.

These patterns contain inherent characteristics which may result in pattern run off and/or pattern appearance variations at the seams or tile edges (darker or lighter pattern lines). These characteristics are inherent in the patterns and are not manufacturing defects. Consideration to these characteristics should be given when selecting an installation method.

Chair pads are recommended under office chairs with roller casters to preserve appearance retention, act as a deterrent toward delamination and to prevent premature or accelerated wear. Walk-off tiles from the Tuff Stuff II Collection are recommended at entryways to reduce soiling.

Duracolor by Mohawk Stain Resistant System passes AATCC Test Method 175 combined with pre-abrasion meeting GSA requirements for stain resistance. Under GSA requirements stain resistant carpets must score no less than 8.0 (10.0 is best) on the AATCC Red 40 Stain Scale. Carpet samples must first be exposed to 100 revolutions of the

Taber abrader (1,000-gram weight per H-18 wheel) and then the abraded area must be stain tested using AATCC tested using AATCC test method 175.

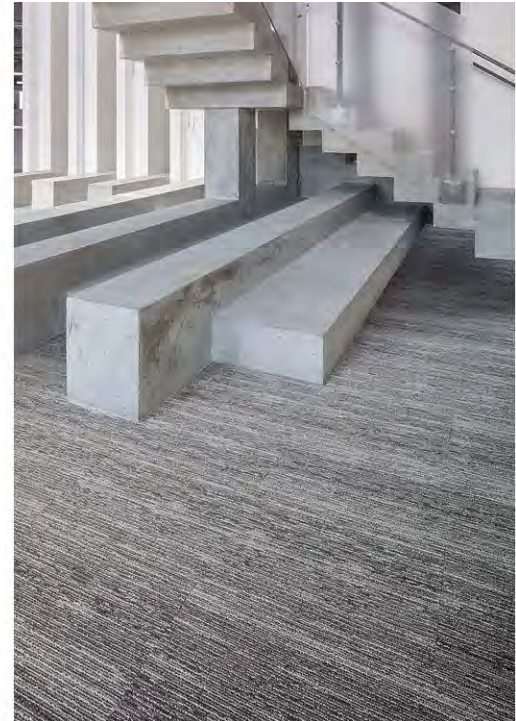
Mohawk Group is providing this architect folder for the purpose of promoting our commercial business. This folder and its samples shall remain the property of Mohawk Group. Color may vary from dye lot to dye lot. Substitution of material may be made due to improved technology, supply limitations or other factors. The performance of this product is not affected by such variations.

For current and complete specifications please visit www.mohawkgroup.com



Digital Terrain

Collection	Expedition
Style Name	Digital Terrain
Style Number	GT341
Product Type	Carpet Tile
Size	12" X 36"
Construction	Tufted
Installation	Monolithic, Half Lap, Brick Ashlar, Basket



Feature	Description
Backing Material	Ecoflex Nxt
Fiber Type	Duracolor® Tricor Premium Nylon with m
Dye Method	Solution Dyed
Installation Methods	Monolithic, Half Lap, Brick Ashlar, Basket
Stitches per Inch	10.5 (41.34 per 10cm)
Density	8571
Tufted Pile Weight	20.00 oz/yd2 (678 g/m2)
Surface Texture	Textured Patterned Loop

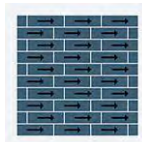
Recommended Installation Methods



Basket Weave



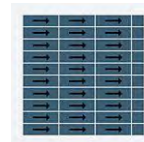
Brick Ashlar



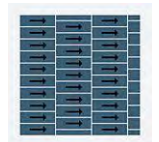
Half Lap



Herringbone



Monolithic



Monolithic Stepping

Colorways



Sulpher

Color code: 138
Style number: GT341



Lagoon

Color code: 576
Style number: GT341



Glacier

Color code: 739
Style number: GT341



Sediment

Color code: 856
Style number: GT341



Alpine

Color code: 869
Style number: GT341



Fossil

Color code: 949
Style number: GT341



Coastal

Color code: 955
Style number: GT341



Mineral

Color code: 978
Style number: GT341

Performance

Feature	Description
Gauge	1/12 (47.00 rows per 10 cm)
Stain Release Technology	Pass
Foot Traffic Recommendation TARR	Severe
Flammability	ASTM E 648 Class 1 (Glue Down)
Smoke Density	ASTM E 662 Less than 450
Static Propensity	AATCC-134 Under 3.5 KV
Soil Release Technology	EcoSentry Soil Protection

Sustainability

Feature	Description
Embodied Carbon	1.33
Beyond Carbon Neutral	-0.066
Pre-Consumer Recycled Content	56
Total Recycled Content	56
NSF 140	EcoFlex NXT - NSF 140 Gold
Indoor Air Quality	GLP 1171
TVOC Range	0.5 mg/m3 or less
Red List Free	True
Declare Label	Nylon Modular Carpet on EcoFlex NXT
Mindful Materials	Participates in Mindful Materials Library
Take Back Program	ReCover Program
Health Product Declaration	HPD 2.1 EcoFlex NXT Gold - 1000 ppm
Environmental Claims Validation	EPD EcoFlex NXT
Global Green Tag	GreenRate Level A, LCARate Silver Plus
LEED Credit Potential	LEED Eligible

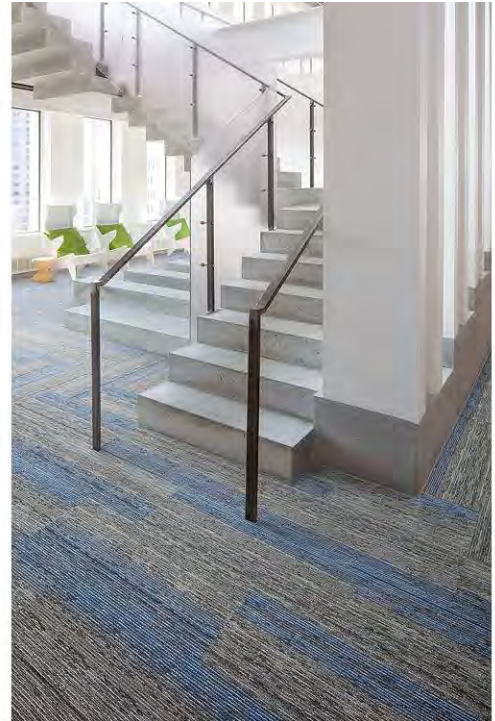
Warranties

Lifetime Limited Carpet Tile Warranty, Lifetime Duracolor Stain Warranty, Lifetime Static

Seismic Wave

Collection	Expedition
Style Name	Seismic Wave
Style Number	GT342
Product Type	Carpet Tile
Size	12" X 36"
Construction	Tufted
Installation	Monolithic, Half Lap, Brick Ashlar, Basket

Feature	Description
Backing Material	EcoFlex NXT
Fiber Type	Duracolor® Tricor Premium Nylon with m
Dye Method	Solution Dyed
Installation Methods	Monolithic, Half Lap, Brick Ashlar, Basket
Stitches per Inch	10.5 (41.34 per 10cm)
Density	7741
Tufted Pile Weight	20.00 oz/yd2 (678 g/m2)
Surface Texture	Textured Patterned Loop



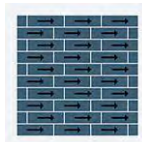
Recommended Installation Methods



Basket Weave



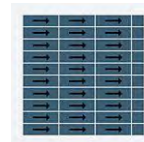
Brick Ashlar



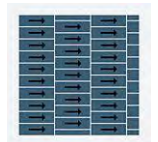
Half Lap



Herringbone



Monolithic



Monolithic Stepping

Colorways



Sulpher

Color code: 138
Style number: GT342



Lagoon

Color code: 576
Style number: GT342



Glacier

Color code: 739
Style number: GT342



Sediment

Color code: 856
Style number: GT342



Alpine

Color code: 869
Style number: GT342



Fossil

Color code: 949
Style number: GT342



Coastal

Color code: 955
Style number: GT342



Mineral

Color code: 978
Style number: GT342

Performance

Feature	Description
Gauge	1/12 (47.00 rows per 10 cm)
Stain Release Technology	Pass
Foot Traffic Recommendation TARR	Severe
Flammability	ASTM E 648 Class 1 (Glue Down)
Smoke Density	ASTM E 662 Less than 450
Static Propensity	AATCC-134 Under 3.5 KV
Soil Release Technology	EcoSentry Soil Protection

Sustainability

Feature	Description
Beyond Carbon Neutral	This product is 100% carbon neutral plus an additional 5% offset
Carbon Handprint	-0.066 kg CO2e/ft2
Embodied Carbon	1.33 kg CO2e/ft2
Total Recycled Content	56%
Pre-Consumer Recycled Content	56%
NSF 140	EcoFlex NXT - NSF 140 Gold
Indoor Air Quality	GLP 1171
TVOC Range	0.5 mg/m3 or less
Red List Free	True
Declare Label	Nylon Modular Carpet on EcoFlex NXT
Mindful Materials	Participates in Mindful Materials Library
Take Back Program	ReCover Program
Health Product Declaration	HPD 2.1 EcoFlex NXT Gold - 1000 ppm
Environmental Claims Validation	EPD EcoFlex NXT
Global Green Tag	GreenRate Level A, LCARate Silver Plus
LEED Credit Potential	LEED Eligible

Warranties

Lifetime Limited Carpet Tile Warranty, Lifetime Duracolor Stain Warranty, Lifetime Static

Gravitational

Collection	Expedition
Style Name	Gravitational
Style Number	GT343
Product Type	Carpet Tile
Size	12" X 36"
Construction	Tufted
Installation	Monolithic, Half Lap, Brick Ashlar, Basket

Feature	Description
Backing Material	Ecoflex Nxt
Fiber Type	Duracolor® Tricor Premium Nylon with m
Dye Method	Solution Dyed
Installation Methods	Monolithic, Half Lap, Brick Ashlar, Basket
Stitches per Inch	10.5 (41.34 per 10cm)
Density	6315
Tufted Pile Weight	20.00 oz/yd2 (678 g/m2)
Surface Texture	Textured Patterned Loop



Recommended Installation Methods



Basket Weave



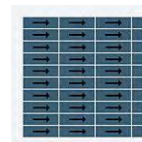
Brick Ashlar



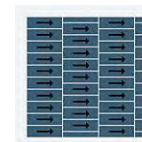
Half Lap



Herringbone



Monolithic



Monolithic Stepping

Colorways



Sulpher

Color code: 138
Style number: GT343



Lagoon

Color code: 576
Style number: GT343



Glacier

Color code: 739
Style number: GT343



Sediment

Color code: 856
Style number: GT343



Alpine

Color code: 869
Style number: GT343



Fossil

Color code: 949
Style number: GT343



Coastal

Color code: 955
Style number: GT343



Mineral

Color code: 978
Style number: GT343

Performance

Feature	Description
Gauge	1/12 (47.00 rows per 10 cm)
Stain Release Technology	Pass
Foot Traffic Recommendation TARR	Severe
Flammability	ASTM E 648 Class 1 (Glue Down)
Smoke Density	ASTM E 662 Less than 450
Static Propensity	AATCC-134 Under 3.5 KV
Soil Release Technology	EcoSentry Soil Protection

Sustainability

Feature	Description
Beyond Carbon Neutral	This product is 100% carbon neutral plus an additional 5% offset
Carbon Handprint	-0.066 kg CO2e/ft2
Embodied Carbon	1.33 kg CO2e/ft2
Total Recycled Content	56%
Pre-Consumer Recycled Content	56%
NSF 140	EcoFlex NXT - NSF 140 Gold
TVOC Range	0.5 mg/m3 or less
Red List Free	True
Declare Label	Nylon Modular Carpet on EcoFlex NXT
Mindful Materials	Participates in Mindful Materials Library
Take Back Program	ReCover Program
Health Product Declaration	HPD 2.1 EcoFlex NXT Gold - 1000 ppm
Environmental Claims Validation	EPD EcoFlex NXT
Global Green Tag	GreenRate Level A, LCARate Silver Plus
LEED Credit Potential	LEED Eligible

Warranties

Lifetime Limited Carpet Tile Warranty, Lifetime Duracolor Stain Warranty, Lifetime Static